

AIRSPACE OBSTACLE TABLE						
NO.	OBJECT TYPE	OBJECT HEIGHT	ABOVE GROUND LEVEL (AGL)	EXISTING APPROACH SURFACE ELEVATION	EXISTING APPROACH SURFACE PENETRATION	DISPOSITION
24	TREE	30.62'	7741.92'	7731.92'	10.00'	RUNWAY 24 APPROACH TO BE LIT/REMOVED*
25	TREE	23.54'	7737.12'	7736.85'	0.27'	RUNWAY 24 APPROACH TO BE LIT/REMOVED*
327	PRIMARY ROAD	15.00'	7695.25'	7694.55'	0.70'	RUNWAY 24 APPROACH TO BE LIT/REMOVED*

APPROACH ROAD INTERSECTION TABLE						
NO.	OBJECT TYPE	OBJECT HEIGHT	ABOVE GROUND LEVEL (AGL)	EXISTING APPROACH SURFACE ELEVATION	EXISTING APPROACH SURFACE PENETRATION	DISPOSITION
5008	PUBLIC ROAD (+15' ADJUSTMENT ADDED)	15.00'	7698.00'	7692.60'	5.40'	RUNWAY 24 APPROACH TO BE LIT/REMOVED*
5009	PUBLIC ROAD (+15' ADJUSTMENT ADDED)	15.00'	7698.00'	7729.81'	-31.81'	RUNWAY 24 APPROACH TO BE LIT/REMOVED*
5010	PUBLIC ROAD (+15' ADJUSTMENT ADDED)	15.00'	7726.00'	7726.48'	-46.48'	RUNWAY 24 APPROACH TO BE LIT/REMOVED*
5048	PUBLIC ROAD (+15' ADJUSTMENT ADDED)	15.00'	7693.79'	7691.50'	12.20'	RUNWAY 24 APPROACH TO BE LIT/REMOVED*
5049	PUBLIC ROAD (+15' ADJUSTMENT ADDED)	15.00'	7699.10'	7730.12'	-31.02'	RUNWAY 24 APPROACH TO BE LIT/REMOVED*
5050	PUBLIC ROAD (+15' ADJUSTMENT ADDED)	15.00'	7715.00'	7765.24'	-50.24'	RUNWAY 24 APPROACH TO BE LIT/REMOVED*
5064	PUBLIC ROAD (+15' ADJUSTMENT ADDED)	15.00'	7698.20'	7729.52'	-33.32'	RUNWAY 24 APPROACH TO BE LIT/REMOVED*
5065	PUBLIC ROAD (+15' ADJUSTMENT ADDED)	15.00'	7691.60'	7696.93'	-5.33'	RUNWAY 24 APPROACH TO BE LIT/REMOVED*
5066	PUBLIC ROAD (+15' ADJUSTMENT ADDED)	15.00'	7694.60'	7679.54'	15.06'	RUNWAY 24 APPROACH TO BE LIT/REMOVED*

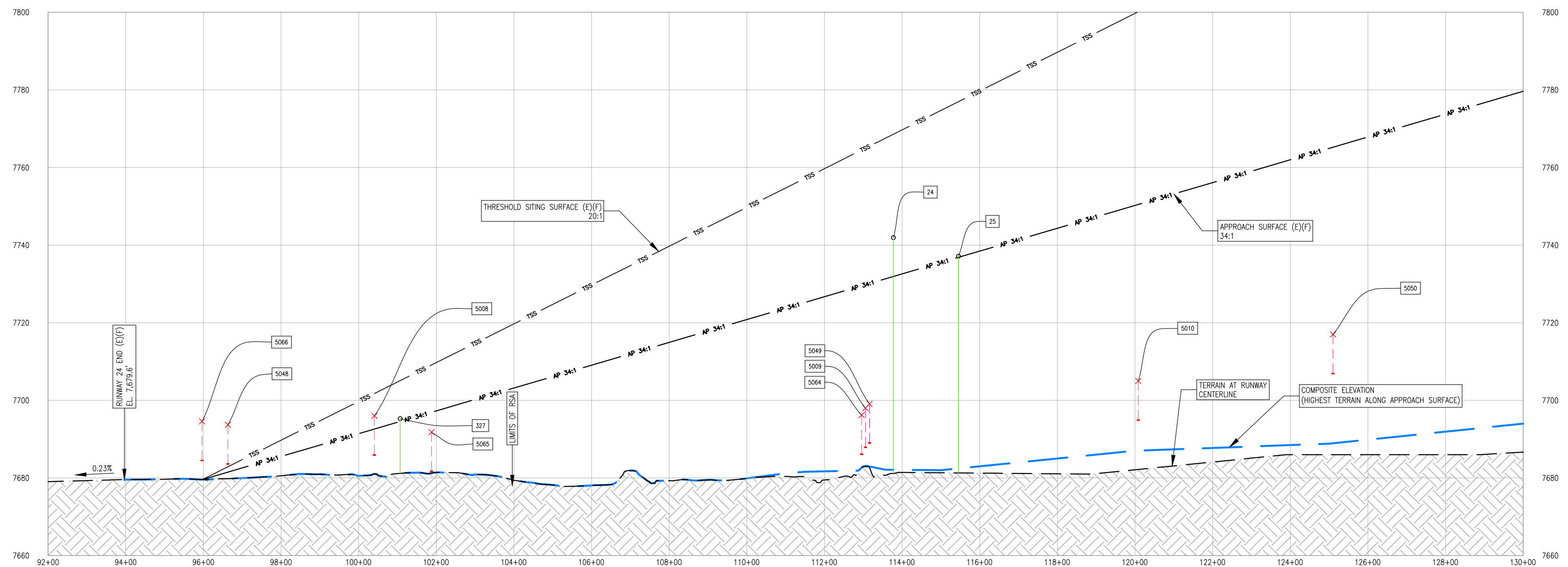
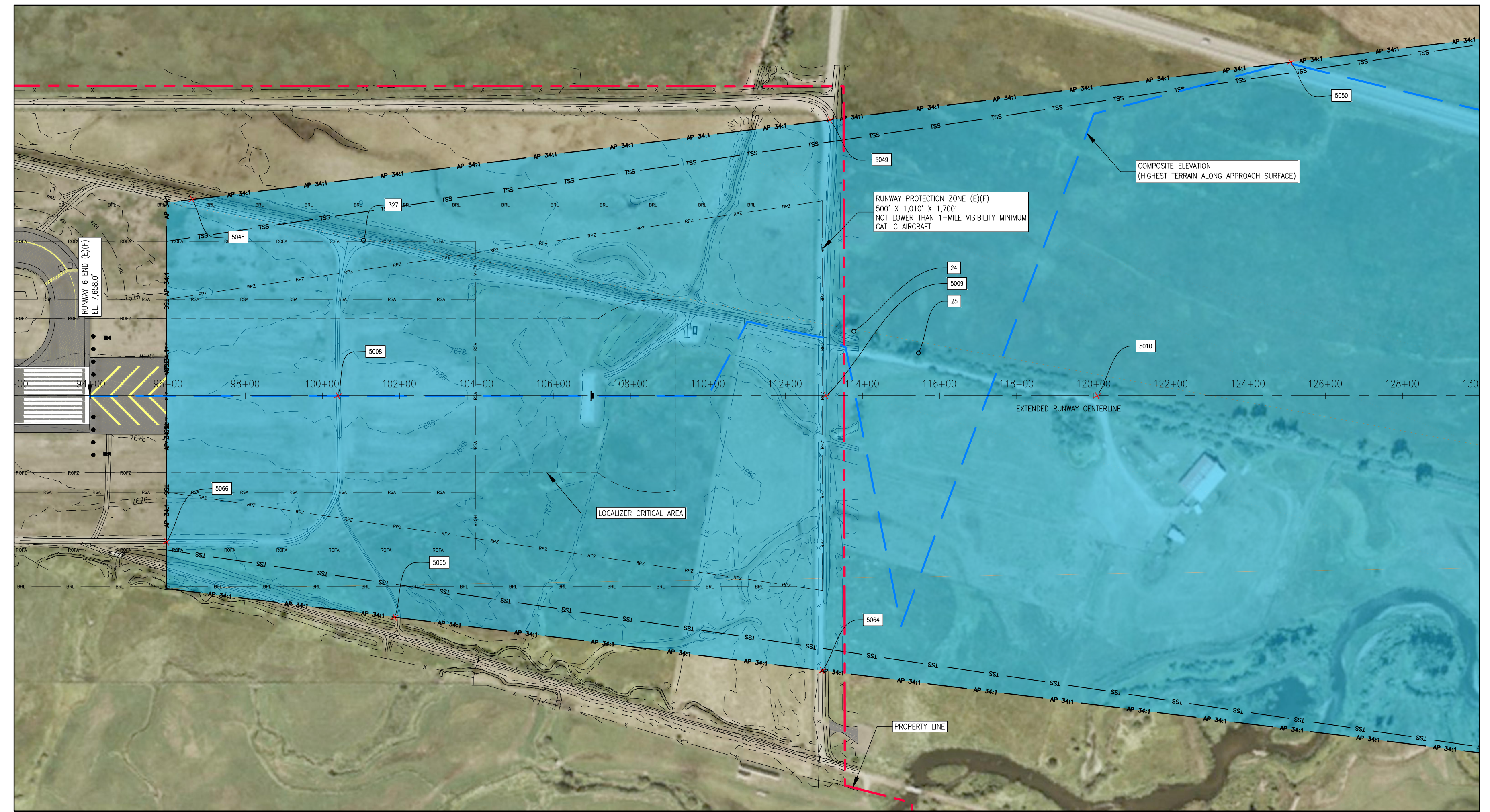
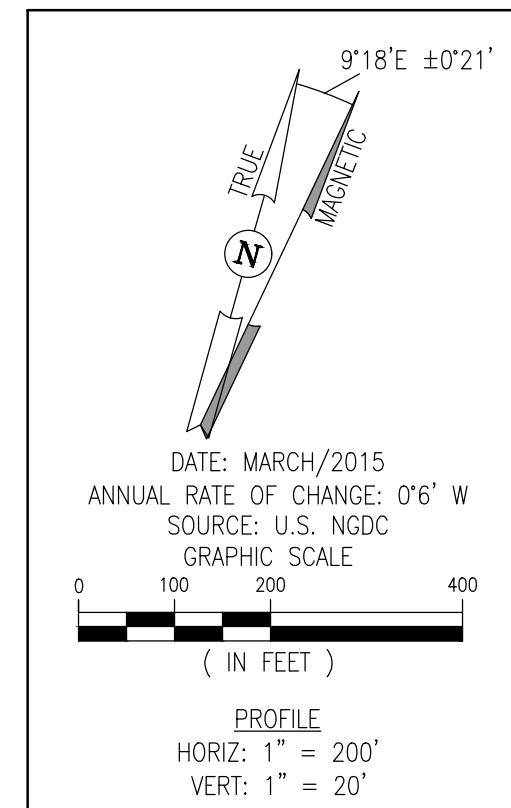
*FINAL DETERMINATION PENDING FAA AERONAUTICAL STUDY

NOTES

- SERVICE ROADS PROVIDE ACCESS TO THE AIRPORT'S NAVIGATIONAL AIDS. ACCESS TO THESE ROADS IS CONTROLLED.
- EXISTING AND FUTURE CONDITIONS ARE SHOWN AS (E)(F).

SOURCE

- THIS SITE PLAN LINE WORK AND AERIAL IMAGE IS BASED ON THE PLANIMETRIC MAPPING & ORTHO-IMAGERY INFORMATION COMPILED BY WOOLPERT, INC. IN 2014.
- OBSTRUCTION SURVEY DATA WAS COMPILED BY WOOLPERT, INC. IN 2014.
- ALL HORIZONTAL COORDINATES - NAD83/2011, ALL VERTICAL COORDINATES - NAVD88



I:\Projects\GUC\CD\MAP-2015\PLANS
 15-12-GUC-ALP-ALSC-RWY-6-24.dwg
 May 17, 2016 - 5:45pm
 ciberloc



DES: R.L.B.	ISSUE RECORD			
	NO.	BY	DATE	DESCRIPTION
DR: R.L.B.	1	S.V.B.	11/17/16	FINAL
CH: S.V.B.				
APP: S.V.B.				

THE PREPARATION OF THIS DOCUMENT MAY HAVE BEEN SUPPORTED, IN PART, THROUGH THE AIRPORT IMPROVEMENT PROGRAM FINANCIAL ASSISTANCE FROM THE FEDERAL AVIATION ADMINISTRATION AS PROVIDED UNDER TITLE 49 U.S.C. SECTION 47104. THE CONTENTS DO NOT NECESSARILY REFLECT THE OFFICIAL VIEWS OR POLICY OF THE FAA. ACCEPTANCE OF THIS AIRPORT LAYOUT PLAN BY THE FAA DOES NOT IN ANY WAY CONSTITUTE A COMMITMENT ON THE PART OF THE UNITED STATES TO PARTICIPATE IN ANY DEVELOPMENT DEPICTED THEREIN NOR DOES IT INDICATE THAT THE PROPOSED DEVELOPMENT IS ENVIRONMENTALLY ACCEPTABLE OR WOULD HAVE JUSTIFICATION IN ACCORDANCE WITH APPROPRIATE PUBLIC LAWS.

AIRPORT LAYOUT PLAN

INNER APPROACH SURFACE DRAWING - RUNWAY 24

SHEET NO.
13 of 19

AIP PROJ. NO. 3-08-0030-048	JVIAION PROJ. NO. 2014.GUC.03	DATE: NOVEMBER, 2016
--------------------------------	----------------------------------	-------------------------